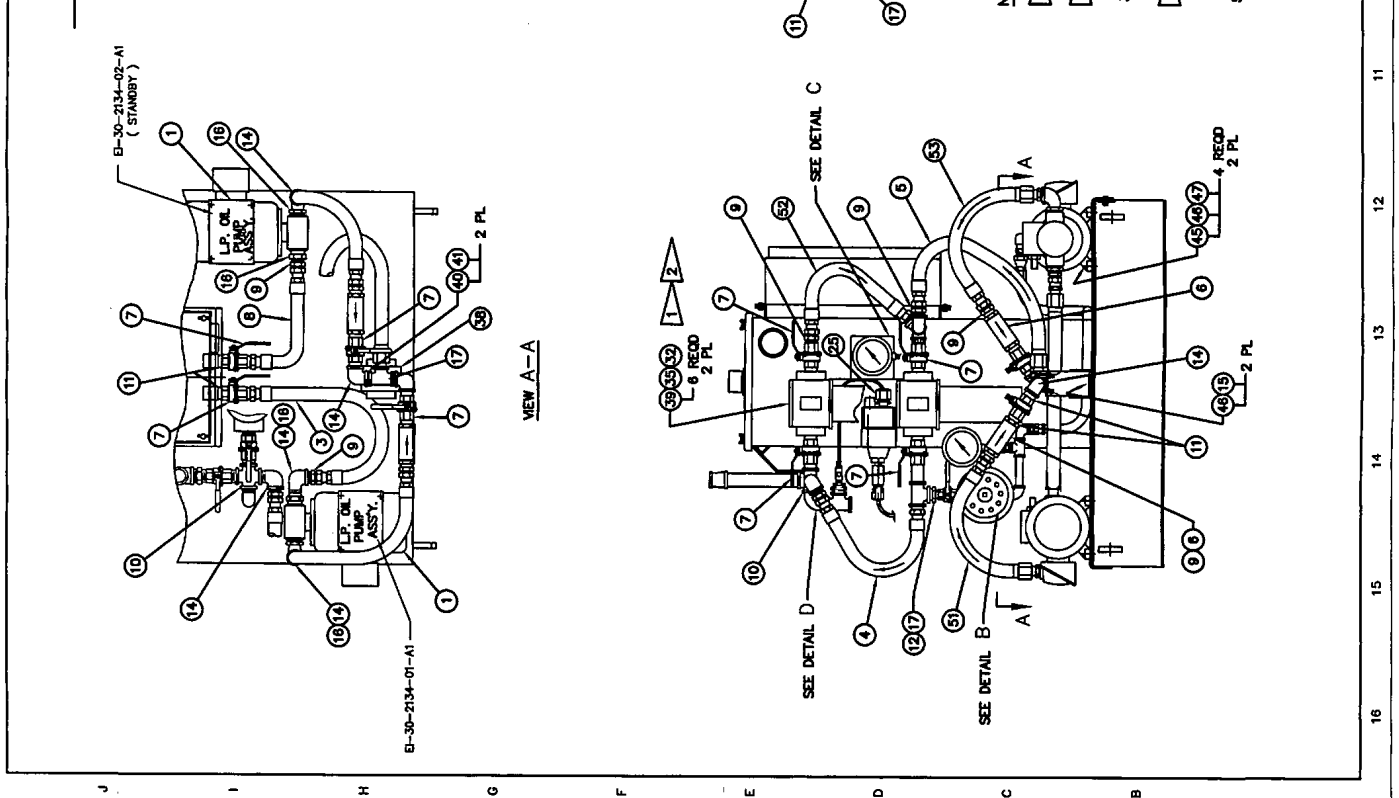
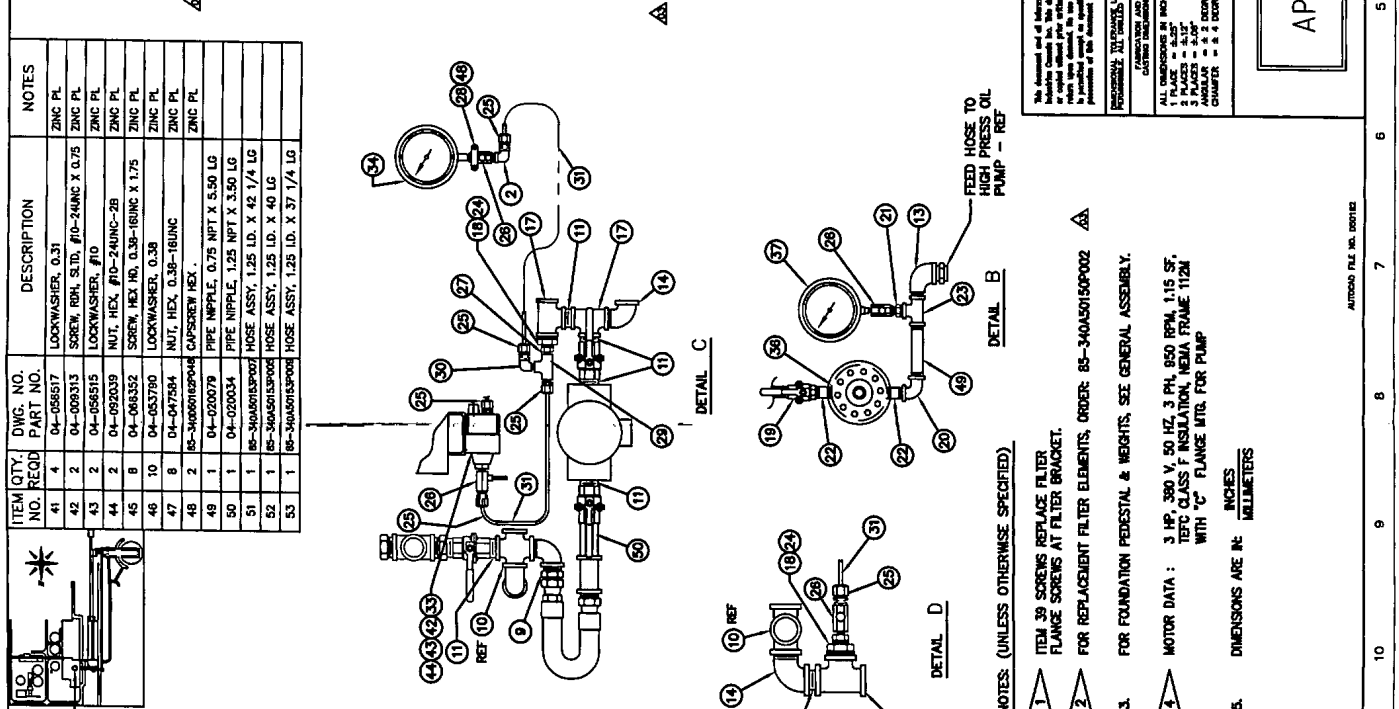


ITEM NO.	QTY.	DWG. NO. PART NO.	DESCRIPTION	NOTES	DATE
1	2	BS-34050213	LOW PRESSURE OIL PUMP ASM.		
2	1	04-021590	PIPE ELBOW, 90 DEG, 0.5 NPT.		
3	1	04-0405013000	HOSE ASSY, 1.25 I.D. X 42 3/4 LG		
4	1	BS-3405013000	HOSE ASSY, 1.25 I.D. X 38 LG		
5	2	BS-3405013000	HOSE ASSY, 1.25 I.D. X 50 1/2 LG		
6	2	04-117455	VALVE, CHECK, 1.25 NPT		
7	8	04-048430	BALL VALVE, MANUAL, 1.25 NPT		
8	1	BS-3405013000	HOSE ASSY, 1.25 I.D. X 30 3/4 LG		
9	7	04-092820	ADAPTER, 1.62 A.I.C. X 1.25 NPT		
10	1	04-021699	PIPE CROSS, 1.25 NPT		
11	11	04-020001	PIPE NIPPLE, CLOSE, 1.25 NPT		
12	1	04-087259	PIPE BUSHING, HEX, 1.25 X 0.75 NPT		
13	1	04-021583	PIPE ELBOW, STREET, 90°, 3/4 NPT		
14	8	04-021583	PIPE ELBOW, STREET, 90°, 1.25 NPT		
15	2	04-066351	SCREW, HEX HD, 0.38-18UNC X 1.25		
16	4	04-087519	PIPE BUSHING, HEX, 1.50 X 1.25 NPT		
17	5	04-021649	PIPE TEE, 1.25 NPT		
18	2	04-095384	PIPE BUSHING, HEX, 1.25 X 1.00 NPT		
19	1	04-046423	BALL VALVE, MANUAL, 0.75 NPT		
20	1	04-026950	PIPE ELBOW, 90°, 0.75 NPT		
21	1	04-020014	PIPE NIPPLE, 0.75 NPT X 2.00 LG		
22	2	04-021649	PIPE TEE, 0.75 NPT		
23	1	04-021649	PIPE TEE, 0.75 NPT		
24	2	04-015034	PIPE BUSHING, HEX, 1.00 X 0.5 NPT		
25	6	04-043859	TUBE CORN. M, 0.25 X 0.5 NPT		
26	4	BS-3405013000	VALVE/BLOCK & BLEED, 0.5 NPT		
27	1	04-020010	PIPE NIPPLE, CLOSE, 0.5 NPT		
28	1	BS-3405013000	MTG. BRACKET		
29	1	04-021658	PIPE TEE, 0.5 NPT		
30	1	04-006610	PIPE ELBOW, STREET, 90°, 0.5 NPT		
31	60°	01-107107	TUBING, 0.25 X 0.034 WALL	SST	
32	2	BS-3405013000	FILTER CARTRIDGE 20 MICRONS		
33	1	PSH-2528	SWITCH, DIFFERENTIAL PRESSURE		
34	1	PH-2527	GAUGE, PRESS, 0-160 PSI (0-1100KPa)	AMETEK	
35	2	BS-3405013000	FILTER OIL, 20 MICRON		
36	1	PCV-2539	REGULATOR, OIL PRESSURE, 0.75NPT		
37	1	PH-2539	GAUGE, PRESS, 0-100 PSI (0-700KPa)	AMETEK	
38	1	BS-018935	SUPPORT BRACKET		
39	12	04-083991	SCREW, HEX HD, 0.31-18UNC X 1.25	ZINC PL	
40	2	04-027438	U-BOLT WITH 0.37 NUTS	ZINC PL	



NOTES: (UNLESS OTHERWISE SPECIFIED)

- ITEM 39 SCREWS REPLACE FILTER FLANGE SCREWS AT FILTER BRACKET.
- FOR REPLACEMENT FILTER ELEMENTS, ORDER BS-34050150002
- FOR FOUNDATION PEDESTAL & HEIGHTS, SEE GENERAL ASSEMBLY.
- MOTOR DATA: 3 HP, 380 V, 50 HZ, 3 PH, 950 RPM, 1.15 SF, TPTC CLASS F INSULATION, NEMA FRAME 112N WITH "C" FLANGE MFR. FOR PUMP
- DIMENSIONS ARE IN: INCHES MILLIMETERS

EQUIPMENT NO. EI-30-2130-01		DATE	
REVISED	BY	DATE	BY
01	SAI CHEUNG		
CONFIDENTIAL - PROPERTY OF SVEDALA INDUSTRIES CANADA INC. 9777 HWY 83A, DELVALE, ONTARIO M9B 3L2			
DATE	SCALE	NO. OF SHEETS	TOTAL SHEETS
04 SEP 22/99	1 OF 1	85-340D501162	06
DR: JH, DCL, JLB	SCALE	NO. OF SHEETS	TOTAL SHEETS
04 MAY 05/00	1 OF 1	85-340D501162	06
AP: DM, WY, GLO	SCALE	NO. OF SHEETS	TOTAL SHEETS
SAR CHESHMEH CONCENTRATOR EXPANSION PROJECT PHASE I			
SAR CHESHMEH OPERATING COMPANY			
CONCENTRATOR			
REFUND AREA			
MECHANICAL DESIGN			
LUBE SYS. L.P. PIPING ASSY.			
REV	NO	DATE	BY
1			
APPROVED			
AUTHORITY FILE NO. 001612			

12/10/99  
FOR REVIEW WAS FOR APPROVAL  
1/12/00  
MODIFIED ASM TO SUIT AS BUILT BY SUPPLIER  
03 LIRS  
28/04/00  
FILTER ELEMENT WAS REPLACED  
04 LIRS  
06/08/00  
L.P. HOSE WAS 31/08/00  
05 LIRP  
07/08/01  
FINAL DRAWING  
08 LIRP  
07/10/23

0347  
0030

LUBE STST. L.P. PIPING ASSY.  
60" TRUNN. BRG. (50 HZ)  
SAR CHESHMEH PROJECT

85-340D501162  
SAR CHESHMEH CONCENTRATOR EXPANSION PROJECT PHASE I

CONCENTRATOR  
REFUND AREA  
MECHANICAL DESIGN  
LUBE SYS. L.P. PIPING ASSY.  
REV: SA-00-280 53500

APPROVED

ALL DIMENSIONS IN INCHES  
1 PLACE = 3.175  
2 PLACES = 6.35  
3 PLACES = 9.525  
ANGULAR = 0-15°  
MACHINE SURFACE FINISH  
250 RMS = 2 PLACES  
250 RMS = 4 PLACES  
250 RMS = 8 PLACES  
UNLESS NOTED

CONSTRUCTION AND  
GENERAL DIMENSIONS  
MATERIALS  
1. ALL DIMENSIONS IN INCHES  
2. 1 PLACE = 3.175  
3. 2 PLACES = 6.35  
4. 3 PLACES = 9.525  
5. ANGULAR = 0-15°  
6. MACHINE SURFACE FINISH  
250 RMS = 2 PLACES  
250 RMS = 4 PLACES  
250 RMS = 8 PLACES  
UNLESS NOTED

FOR FOUNDATION PEDESTAL & HEIGHTS, SEE GENERAL ASSEMBLY.

MOTOR DATA: 3 HP, 380 V, 50 HZ, 3 PH, 950 RPM, 1.15 SF, TPTC CLASS F INSULATION, NEMA FRAME 112N WITH "C" FLANGE MFR. FOR PUMP

DIMENSIONS ARE IN: INCHES MILLIMETERS

APPROVED

CONCENTRATOR  
REFUND AREA  
MECHANICAL DESIGN  
LUBE SYS. L.P. PIPING ASSY.

REV: SA-00-280 53500

APPROVED

CONCENTRATOR  
REFUND AREA  
MECHANICAL DESIGN  
LUBE SYS. L.P. PIPING ASSY.

REV: SA-00-280 53500

APPROVED

CONCENTRATOR  
REFUND AREA  
MECHANICAL DESIGN  
LUBE SYS. L.P. PIPING ASSY.

REV: SA-00-280 53500

APPROVED